

\$219,000 - Lot 8 Greywolf Drive, Panorama

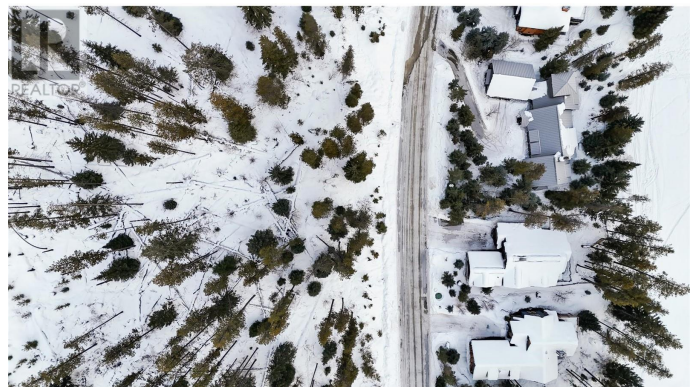
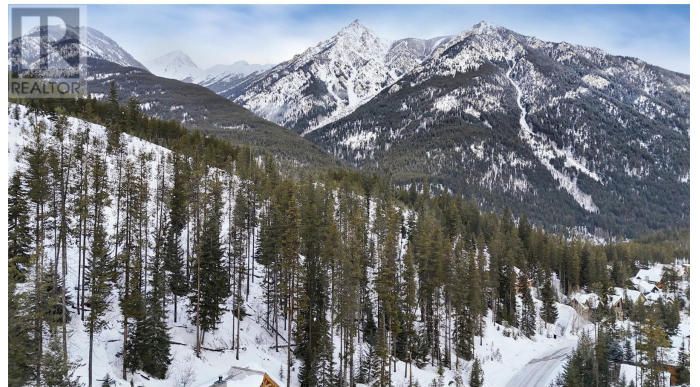
MLS® #10336001

\$219,000

0 Bedroom, 0.00 Bathroom,
Vacant Land on 0.46 Acres

Panorama, Panorama, British Columbia

Build Your Dream Retreat with Breathtaking Mountain Views Discover the perfect canvas for your future home or vacation getaway with this exceptional lot, offering panoramic mountain vistas in a sought-after golf and ski destination. Nestled in a tranquil setting, this prime location provides the ultimate blend of privacy, convenience, and year-round adventure. Wake up to stunning sunrises and ever-changing landscapes that create a breathtaking backdrop in every season. Outdoor enthusiasts will love the easy access to world-class skiing at Panorama Mountain Resort in winter and championship golf at Greywolf Golf Course in summer. With endless hiking, biking, and recreational opportunities just steps away, every day feels like an escape. Located just a short drive from amenities, dining, and charming local shops, this lot is ideal for building anything from a cozy cabin to a luxurious retreat. Don't miss your chance to own a piece of paradise in this vibrant mountain community where adventure and relaxation go hand in hand! (id:36535)



Essential Information

Listing #	10336001
Price	\$219,000
Bathrooms	0.00
Acres	0.46

Type Vacant Land
Sub-Type Strata

Community Information

Address Lot 8 Greywolf Drive
Subdivision Panorama
City Panorama
State British Columbia
Zip Code V0A1T0

Amenities

Utilities Sewer

Additional Information

Zoning Unknown

Listing Details

Listing Office Courtesy Of Tracy Hryhoruk Of RE/MAX Elk Valley Realty

MLS®, REALTOR®, and the associated logos are trademarks of The Canadian Real Estate Association.