

# \$599,000 - 880 Lakeview Drive Drive Unit# 109, Windermere

MLS® #10326663

**\$599,000**

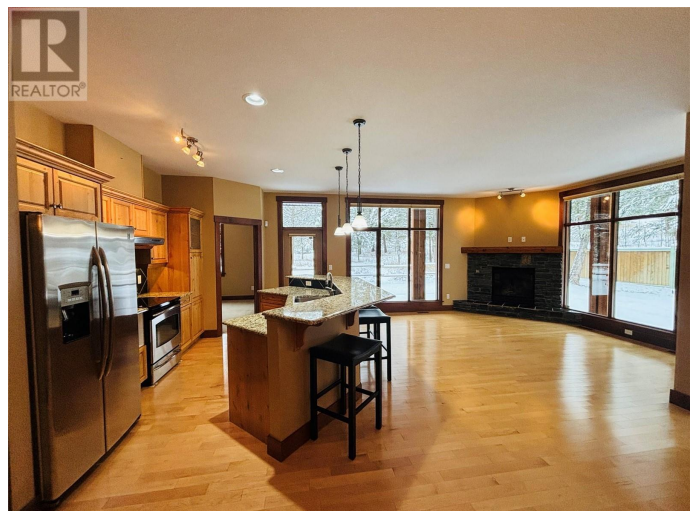
2 Bedroom, 2.00 Bathroom, 1,257 sqft  
Single Family on 1.00 Acres

Copperside, Windermere, British Columbia

Welcome to your dream ground floor condo located in the highly desirable Copperside, where luxury meets comfort in a stunning setting! This exquisite property features two spacious bedrooms and two elegant bathrooms, perfect for relaxing after a long day. Step inside to discover beautiful hardwood flooring and stylish granite countertops that add a touch of sophistication to your living space. Large windows allow an abundance of natural light to flood the home, creating a warm and inviting atmosphere. Enjoy the convenience of two underground parking stalls and a dedicated storage locker, along with the added bonus of golf cart parking. But that's not all—this condo grants you private access to a serene lake and beach, ideal for leisurely afternoons spent soaking up the sun or enjoying water activities. Take advantage of the incredible amenities, including a sparkling pool, rejuvenating hot tub, fully-equipped gym, and a spacious outdoor private patio perfect for entertaining or unwinding. With picturesque surroundings and abundant wildlife, this property truly offers a lifestyle of luxury and tranquility. Don't miss the chance to make this extraordinary condo your new home! (id:36535)

Built in 2007

## Essential Information



Listing #	10326663
Price	\$599,000
Bedrooms	2
Bathrooms	2.00
Square Footage	1,257
Acres	1.00
Year Built	2007
Type	Single Family
Sub-Type	Strata

### **Community Information**

Address	880 Lakeview Drive Drive Unit# 109
Subdivision	Copperside
City	Windermere
State	British Columbia
Zip Code	V0A1K3

### **Amenities**

Features	Central island
Parking Spaces	2
Parking	Heated Garage, Parkade, Underground

### **Interior**

Appliances	Refrigerator, Dishwasher, Dryer, Oven - Electric, Microwave, Washer
Heating	Geo Thermal See remarks
Cooling	See Remarks
Fireplace	Yes
Fireplace Fuel	Propane
Fireplace Type	Unknown
# of Stories	1

### **Exterior**

Exterior	Brick, Stucco, Wood
Roof Material	Asphalt shingle
Roof Style	Unknown

### **Additional Information**

Zoning	Multi-Family
--------	--------------

### **Listing Details**

Listing Office

Courtesy Of Kodi-Lee Logan Of Royal LePage Rockies West

MLS®, REALTOR®, and the associated logos are trademarks of The Canadian Real Estate Association.